



MaineCare Services

An Office of the
Department of Health and Human Services

Paul R. LePage, Governor

Mary C. Mayhew, Commissioner

State Innovation Model (SIM)

June 2013



Presentation Overview

- State Innovation Model (SIM) Introduction
- Existing MaineCare Initiatives
- SIM In Depth

For more information, please visit: www.maine.gov/sim



SIM Overview

“...to test whether new payment and service delivery models will produce superior results when implemented in the context of a state-sponsored State Health Care Innovation Plan. These plans must improve health, improve health care, and lower costs for a state’s citizens through a sustainable model of multi-payer payment and delivery reform, and must be dedicated to delivering the right care at the right time in the right setting.”



Overarching High-Level View of Maine's SIM Grant

This grant will ultimately position Maine to assess the full opportunity impact associated with existing healthcare delivery test reform models by moving the test models to the next level through:

- Enhanced care delivery capabilities
- Greater access to high-value care information and data
- Enhanced care delivery “actor” (provider and patient) training / support
- Introduction of targeted incentives



Existing MaineCare Initiatives

The existing healthcare delivery test reform models include MaineCare's:

- Emergency Department initiative
- Health Homes
- Accountable Communities



Emergency Department Initiative

- Identifying high-cost utilizers of hospital Emergency Departments and intensifying the efforts to manage their care
- Providing services in the most appropriate, cost-effective manner
- Establishing solid relationships with primary care providers and improving patient outcomes
- ED Project achieved a total savings of \$4.151M in FY12 compared to FY11
- Estimated savings to-date in FY13 increased approximately \$81,004 over FY12
- Total savings for FY13 are projected to be about \$4.2M



Maine Health Homes

Stage A:

- Health Home = Medical Home primary care practice + CCT
- Currently have 150 enrolled practices and 10 CCTs
- Payment weighted toward medical home
- Eligible Members:
 - Two or more chronic conditions
 - One chronic condition and at risk for another

Stage B:

- Health Homes = CCT with behavioral health expertise + primary care practice
- Payment weighted toward CCT
- Eligible Members:
 - Adults with Serious Mental Illness
 - Children with Serious Emotional Disturbance



Maine Health Homes – Stage B

| | |
|--|--------------------|
| <ul style="list-style-type: none"> •Release of Request for Information (RFI) •Meetings w/ consumer organizations to facilitate RFI comment •Review/incorporation of written RFI comments and feedback •Public report out on key RFI issues and recommendations | <p>April/May</p> |
| <p>State Plan Amendment</p> | <p>July 2013</p> |
| <p>Provider Application Process</p> | <p>July/August</p> |
| <p>Implementation</p> | <p>Fall 2013</p> |
| <p>Evaluation</p> | <p>Ongoing</p> |



Accountable Communities

An entity responsible for population's health and health costs that is:

- Provider-owned and driven
- Possesses a strong consumer component and community collaboration
- Includes shared accountability for both cost and quality

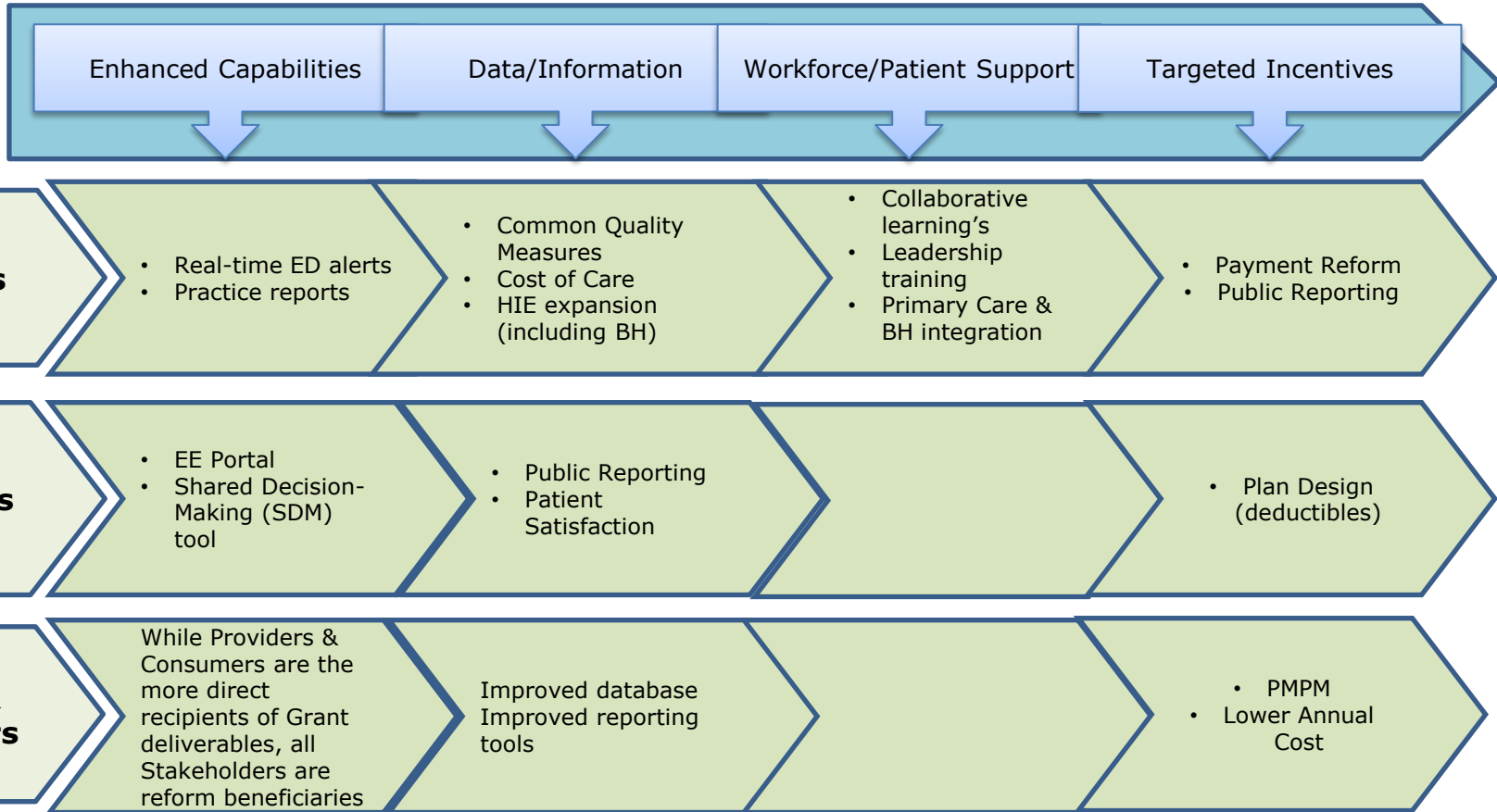


Maine's Accountable Communities: The Basic Components

- Providers will work together and propose an alternative contract to share in any savings achieved
- The amount of shared savings will depend on achieving quality benchmarks
- Open to any willing and qualified providers statewide (through an application process)
- Accountable Communities are not limited by geographical area
- Members retain choice of providers
- Alignment with aspects of other emerging Accountable Community Organizations (ACOs) is desired
- Flexible design encourages innovation



SIM's Enhancements to Test Models





Areas of Investment / Provider Benefits

Patient Accountability

- Resources for shared decision making
- Assistance with patient incentives, benefit design

Data Analytics

- EHR for behavioral health organizations
- Connection to Health Information Exchange
- Resources for other data analytic needs

Transformation Support

- Leadership training
- Practice transformation learning collaborative
- ACO learning collaborative

Payment Reform

- Greater consistency and alignment across payers/ initiatives
- Potential for grant-funded performance-based shared savings payments

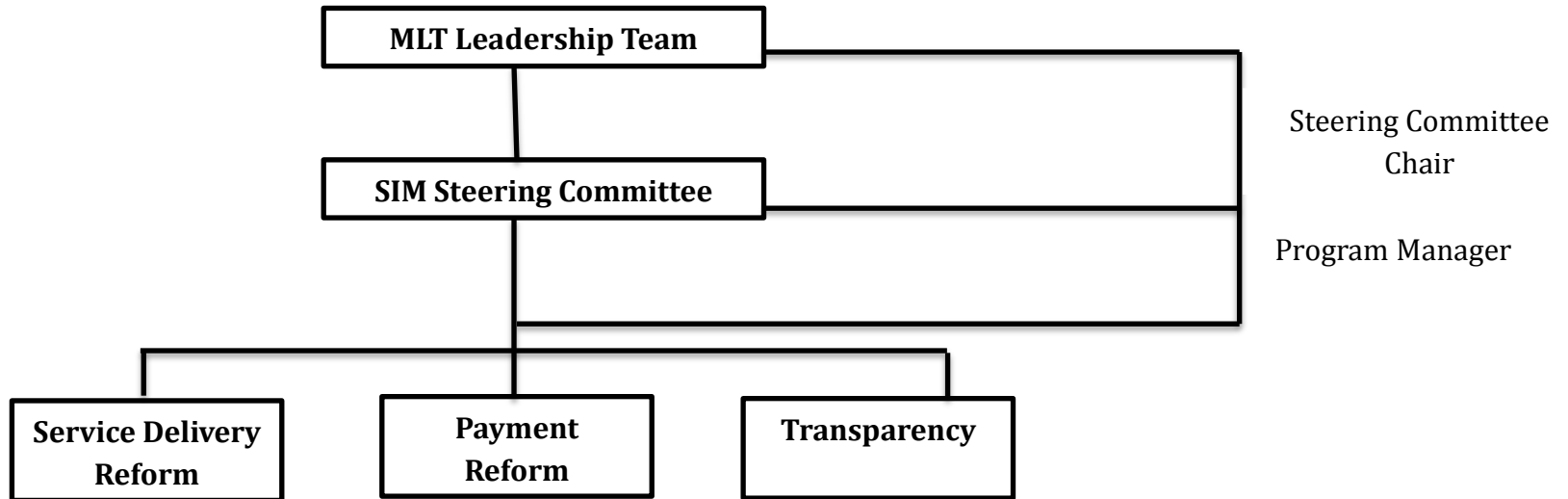


SIM Key Partners

- Maine Health Management Coalition
 - Payment reform, reporting and transparency
- Quality Counts!
 - Workforce readiness and support
- HealthInfoNet
 - Clinical data and transparency



SIM Governance Structure





Executive Leadership Team

- Responsible for approval of changes to budget and scope of work.
- Accountable to fulfilling grant reporting requirements to CMMI.
- Final arbiter on escalated issues impacting scope, cost or timeline, as well as on unresolved issues among Steering Committee.
- Membership will be appointed by Commissioner of DHHS and will be comprised of State of Maine leadership from various departments.



Steering Committee

- Represents a cross-stakeholder/partner leadership group responsible for grant execution oversight and alignment of effort toward grant objectives.
- Responsible for:
 - Maintaining a consistent understanding of status of grant activity as it compares to overall plan
 - Removing barriers impeding progress and providing direction on course correction, when needed
 - Ensuring working groups focus/efforts maintain alignment with overall grant objectives
 - Approving recommendations from working groups



Steering Committee Workgroups

- Three major workgroups include:
 - Transparency
 - Payment Reform
 - Service Delivery Reform
- The workgroups:
 - Are responsible for planning and execution/delivery of specific grant deliverables
 - Leverage insights from stakeholders to help achieve stated goals
 - Identify and create awareness of dependencies and cross workgroup collaboration needs
 - Propose what escalated issues should be brought to the Steering Committee and provide recommended resolution
 - Support Program Manager and provide workgroup-level plans to inform the development and management of an overall integrated plan



Immediate Next Steps / Key Milestones

- Steering Committee kick-off meeting planned for June 19th.
- Steering Committee meetings held the first and third Wednesday of the month through October 2013 (monthly meetings, thereafter).
- Operational Plan submitted to CMMI by August 1, 2013.



Communication Plan

- Updates provided via MaineCare listserv
- Documents and other important updates available at:
www.maine.gov/sim
- For more information, please contact Randal Chenard, Program Manager: Randal.Chenard@maine.gov